

Threads Across Nebraska 2017 - October 13 & 14, 2017

The featured quilter is Paulette Peters. She is a long time quilter that has taught quilting on the national level, designed numerous fund-raising quilts and written four quilting books. Her book, *Borders By Design* is available as an e-book from the publisher at www.martingale-pub.com. Her work has appeared in many publications and exhibits, including *Quiltmaker* and *Quilter's Newsletter* magazines, the IQS show in Houston and the AQS show in Paducah. Paulette is a founding member and past president of Cottonwood Quilters Guild, the Nebraska State Quilt Guild, and Friends of the International Quilt Study Center in Lincoln. She is in the NSQG Hall of Fame. *Threads Across Nebraska* will feature a timeline of Paulette's quilts which reflect the styles, designs and techniques that have crossed the years of our quilting revival: 1976 thru 2017.

There will also be a display of quilts from the International Quilt Study Center. Details will be coming.

Classes are described below. The cost of these classes will be \$25 for a 90 minute class, \$35 for a 3 hr class. The admission fee will be paid when class registration is paid. Upon registration each person will get a confirmation and a pass getting them into the show. On Saturday the half day class participants will be allowed to enter early. Signup sheets will be available at QNE.

If you have a quilt show coming up or a town festival, please contact LeAnne Killion, 308-440-8867, so she can get brochures to you. All help is appreciated when it comes to spreading the word!! Brochures and posters will be available at QNE in Kearney.

Class Descriptions

Simplify the Math of Quilt Making by Colleen Minnick

Friday 9:30 -11:00

"Recipe quilting-following others people's designs and patterns." Why not create in the size and design YOU desire? Can you look at a picture of a quilt, discern the blocks/divisions, and then draft your own pattern in the size you want? If a block of any size is set 'on point,' use a basic figure to determine distance from point to point. You will do exercises using simple formulas to solve various concepts of block assembly in various sizes and designs to enable you to create your quilts in less time in the size and design you prefer. Supply list: 6-10 sheets of graph paper, Clear plastic 12" ruler, fine line lead pencil(s) with eraser, calculator with square foot capability, compass and protractor (if you have).

The Pretty Pinkeeper by Lisa DeBord

Friday 11:30 -1:00



Every stitcher needs a pin cushion or two, don't they? And, right now, it seems stitchers are collecting them-lots of them! Using buttonhole embroidery with wool makes "The Pretty Pinkeeper" oh, so pretty! It's pleasant, peaceful and portable handwork that finishes neatly and quickly. The project will be completed with wool on cotton for that oh so fresh country look. Kit \$12 (Each participant must purchase a kit).

Hawaiian Appliqué by Jan Sears

Friday 1:00 - 4:00

The class will teach needle-turn appliqué, learning to sew inside and outside curves and points by hand. You will find it fun and relaxing. Machine appliqué will be demonstrated as time permits. A little Hawaiian quilt history will be added. The patterns will be simple for beginners. Ideas for finishing and future projects will be presented. A \$7 kit fee will cover the fabric, needles and thread and instructions.

Color-Step Outside the Box by Sandy Gripenstroh

Saturday 1:00 - 2:30

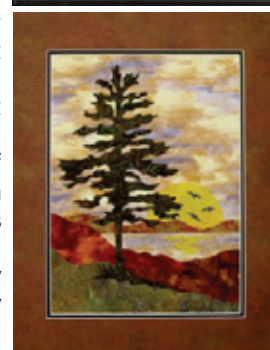
So many quilters have a hard time choosing fabrics, or tend to find a comfortable "lane" and just stay there. I want to unravel the mysteries of fabric choice and encourage each person to step away from their comfort zone in order to create something truly unique.

Raw Edge Applique Landscape

by Doris Deutmeyer, Fabrications by Doris

Saturday 9:00 - 12:00

Fused Applique is an exciting and easy technique for creating fabric landscapes. In this class you will learn raw edge applique method, how to choose your fusible and fabric, tools for success, and finishing methods. Get inspired with samples of creative display options. All skill levels, Kit \$28 (Each participant must purchase a kit) Kit Includes: Pattern, all fabric, and choice of fusible to complete one 11" x 15" landscape Choose "Crystal Night" or "Sunset Pine" kit. Supplies to Bring: Transparent, heat resistant pressing sheet, Applique Pressing Sheet by Bear Thread Design (recommended), Small fabric scissors - Fiskars 5" Spring Assist Micro-tip (recommended), Paper scissors, Pencil - mechanical pencil preferred, 12" straight edge ruler. NOTE: Applique Pressing Sheet and Fiskars scissors will be available for purchase. ***Mat kits will be available at special class price*** Choice of 11 x 15 landscape, "Crystal Night" or "Sunset Pine".



Crystal Night, capture the feeling of a cold crisp winter evening, Pattern includes deer, Moose, howling wolves and a bear with Cub.

Sunset Pine, beautiful sunset sky fabric captures the colors of Autumn by the lake

Registration Form

Name: _____

Contact Information: _____

Friday, October 13

- Colleen Minnick - Simplify the Math of Quilt Making \$25 _____
- Lisa DeBord - The Pretty Pinkeeper \$25 + Kit fee \$12 = \$37 _____
- Jan Sears - Hawaiian Appliqué \$35 + Kit fee \$7 = \$42 _____

Saturday, October 14

- Sandy Gripenstroh - Color-Step Outside the Box \$25 _____
- Doris Deutmeyer - Raw Edge Landscape
- Crystal Night Sunset Pine \$35 + Kit fee \$28 = \$63 _____

Show Admission \$6 _____

Total \$ _____

Make Check Payable To: Threads Across Nebraska.

Return to: LeAnne Killion

4315 29th Ave Pl, Kearney, NE 68845